

BIO-SOL INC® Directions



No mixing or measuring!

Just drop one packet in each drain and run warm water over it until it dissolves. Repeat this once a week for the first month.

After the initial treatment treatment, simply dissolve one packet in each drain once a month.

As a simple reminder, check off the appropriate box after using a packet.

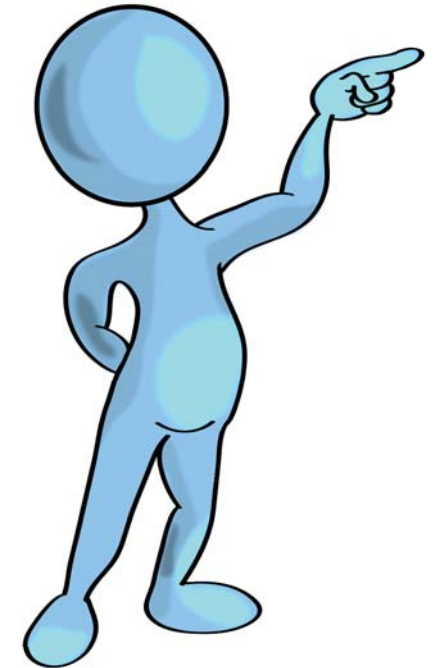
Month 1 <input type="checkbox"/> <input type="checkbox"/> <input type="checkbox"/> <input type="checkbox"/>	Month 2 <input type="checkbox"/>	Month 3 <input type="checkbox"/>
Month 4 <input type="checkbox"/>	Month 5 <input type="checkbox"/>	Month 6 <input type="checkbox"/>
Month 7 <input type="checkbox"/>	Month 8 <input type="checkbox"/>	Month 9 <input type="checkbox"/>
Month 10 <input type="checkbox"/>	Month 11 Time to reorder <input type="checkbox"/>	Month 12 <input type="checkbox"/>

For Optimal Benefits

BIO-SOL INC® Sink & Drain is designed to be a long term drain treatment. Since the bacteria are “living” organisms, use of products labeled as “Anti-Bacterial, Anti Septic, Disinfectant, Sanitizer, or Kills Germs” should be used sparingly or eliminated. Try using non-chlorine bleaches, cleaners, and dishwashing products.

BIO-SOL INC® Sink & Drain will not dissolve any living tissue, so if slow drains are being caused by tree roots, other services will need to be utilized.

Initially, you may notice that some drains will run slow. Do NOT become alarmed. This is caused by the bacteria loosening and dislodging the waste build up. If drain does become plugged, use a cable or plunger to dislodge build up. Do not use drain cleaners as this will kill the active bacteria in BIO-SOL INC® Sink & Drain.



Sink & Drain Treatment

Easy to Use

No Measuring

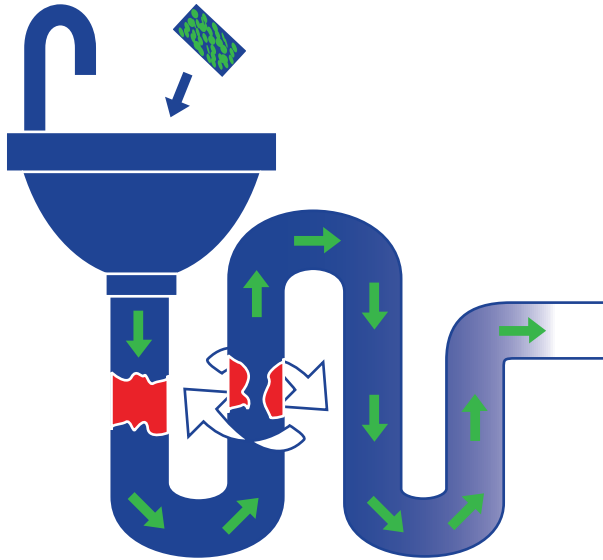
All-Natural

Contact Your BIO-SOL INC® Dealer:

What BIO-SOL INC® Does

BIO-SOL INC® Sink & Drain is made from nature's own bacteria and enzymes that "eat" items like food particles, grease, hair, and soap scum, commonly known as organic waste, that cause home drains to run slow and create a foul odor.

BIO-SOL INC® Sink & Drain adheres to all waste, allowing it to clean the pipe's internal surface.



BIO-SOL INC® Sink & Drain was originally developed and used by municipal waste water treatment facilities as a long term solution.

What causes slow running drains?

Drains slow over time when pipes build up organic waste. Waste build-up lessens the interior size of the pipe wall, leaving less room for water to drain through the pipe.

BIO-SOL INC® Applications

Residential:

- Kitchen Sinks
- Garbage Disposals
- Bath/Shower Stalls
- Laundry Room
- Floor Drains
- Septic Systems
- RV's & Boat Holding Tanks

Commercial:

- Grease Traps
- Lift Stations
- Garbage Disposals
- Porta Potties



Safety:

BIO-SOL INC® Sink & Drain is made from naturally occurring bacteria and enzymes and is not poisonous. It does not attack living tissue or inorganic waste, like plastics that your pipes are made from.

Go Green

BIO-SOL INC® Sink & Drain is made from natural acting, environmentally friendly agents. It is continuously working to keep drains flowing freely, eliminating odors. With economical monthly treatments, your pipes will maintain their free flowing ability just as if they were newly installed.

Using mechanical equipment will temporarily open up your pipes, leaving exposed surfaces for organic waste to accumulate on again. This causes the need for retreatment, usually at the most inconvenient times.

Chemical drain cleaners are caustic, unsafe and often ineffective. Once a chemical drain cleaner is added to the drain, it has to travel to the site of the blockage. The further away from the drain the blockage is, the more diluted and less able the chemical is to dissolve the blockage.

